

Catalog of Sculptures 1952–1982

Cintia Mezza*

The cataloguing of works that unfolds here corresponds to the first investigation into Alicia Penalba's sculptural production to be carried out in Buenos Aires. It contains information that is up to date at the moment of the book's publication. It is estimated that this volume will contribute toward protecting and disseminating works of genuine patrimony and that it will provide the basis for future research.

The primary sources of information were: *a)* the Archivo Alicia Penalba (AAP, Alicia Penalba Archive) in Buenos Aires, including the essential contribution made by a group of records for each work with the artist's handwritten notes, different lists, orders for castings and information written on the backs of photographs from the period, and *b)* examples of sculptures surveyed in national and international institutional collections and in public and private collections in Buenos Aires.

The list focuses on sculpture, including works related to architecture, relief pieces and those in small and large formats. It begins with abstract sculptures from 1952 and continues until 1982, the year of the artist's death.

To facilitate its reading, the criteria and references employed and the abbreviations used are listed below.

Works are presented in accordance with chronological criteria. In cases where several works date from the same year, they are listed in alphabetical order.

Titles: Listed in their original language—in general, French—, followed by an English translation.

Dating: Works' dates correspond to the year in which the artist made the mold-piece that marked the beginning of a numbered edition of examples. Two dates joined by a dash indicate a more prolonged period of production.

Technique: Technical procedures were analyzed by linking direct observation with the documentation available. In the examples resulting from foundry casting, the "lost wax" process was generally the one used.

In those cases where casting information was confirmed, the foundry and edition are cited; for example: "edition of 2."

Information regarding the foundries, many of which are still active today, is abbreviated: *Alsasua*: Fundiciones Alsasua, Spain; *Da Prato*:

Fonderia Artistica Figli Da Prato, Pietrasanta; *Michelucci*: Fonderie Michelucci, Pistoia; *Susse*: Susse Frères Fondateur, Paris; *Tesconi*: Tesconi & C. Fonderia d'arte, Pietrasanta; *Tommasi*: Vignali & Tommasi Fonderia d'arte, Pietrasanta; *Valsuani*: Fonderie Valsuani, Paris.

Editions: The edition information expresses the planned edition, which was not fully executed in all cases, given that available information indicates some incomplete editions. The existence of A/P examples is listed only when such a piece was detected or the information could be compared with an additional source of information.

The artist has often developed more than one edition of a single work, in different sized versions (frequently generating "large," "medium" and "small" versions of the same piece), conserving style, theme and titles that link the examples together, occasionally with several years of difference between the production and/or casting dates. In these cases, all versions have been grouped into a single listing, utilizing initials a, b, c, etc., to identify them.

Similarly, the relief pieces ("Mural sculptures" and "Flying forms") and fountains executed for different architectural projects have been grouped together in a single listing.

Measurements: These are expressed in centimeters: height x width x depth. For their determination, the area bearing signature markings and/or casting stamps was considered the back side of the piece. Photographic records from the era and the artist's notes have also been consulted to confirm the works' orientation or most privileged viewpoints. With these premises in mind, directly observed pieces were measured and, in these cases, priority was given to these results for this publication.

Collections: The catalog records the national and international institutional collections that include works by the artist confirmed to date.

Exhibitions, reproductions and complementary information corresponding to each work: The artist's official web page (<http://www.penalba.com/>) can be consulted, where the extended version of this cataloguing has been published, including sculptures still conserved from her figurative period (1949–1952).

* The cataloguing process was designed and elaborated by the author with collaboration from Luisa Tomatti.

1.

Passion de la jungle (*Jungle Passion*)**a. Passion de la jungle n° 1**, 1952–1953

Bronze. Foundry: *Susse*, edition of 6

38 x 24 x 24

b. Passion de la jungle, 1953

Fired clay, unique piece

57.5 x 35 x 35

c. Passion de la jungle, 1953–1954?

Bronze. Foundry: *Susse*, edition of 6 + 1 A/P

56 x 34 x 34

d. Grande passion de la jungle (*Large Jungle Passion*), 1953

Fired clay, unique piece

116 x 50 x ?

Collection: MUba Eugène Leroy, Tourcoing; inventory no.: 959.50.1.

e. Grande passion de la jungle, 1968–1969

Granite, unique piece

210 x 94 x 92

Collection: Commune de Vitry-sur-Seine, Créteil, installed in public space.

2.

Fruit de mer (*Sea Fruit*)**a. Petit fruit de mer** (*Small Sea Fruit*), 1953

Bronze. Foundry: *Valsuani*, edition of 6 + 1 A/P

13 x 14 x 13

b. Fruit de mer n° 2, 1956–1957?

Bronze. Foundry: *Da Prato*, edition of 8 + 1 A/P

33 x 32 x 30

c. Fruit de mer n° 3, 1958

Stone, unique piece

h 35

d. Petit fruit de mer 2, 1959

Bronze. Foundry: *Susse*, edition of 6 + 1 A/P

20 x 20 x 22

e. Fruit de mer, 1962

Bronze. Foundry: *Valsuani* and *Da Prato*, edition of 6

42 x 56 x 40

Note: Part of the edition was produced at the *Valsuani* foundry and part at *Da Prato*.

f. Grand fruit de mer (*Large Sea Fruit*), 1963–1965

Plaster

n/a

3.

Sorcier (*Sorcerer*)**a. Sorcier (1^{ère} version)** (*1st version*) or **Petit sorcier** (*Small Sorcerer*), 1953

Bronze. Foundry: *Susse*, edition of 6

36 x 16 x 14

b. Sorcier (3^{ème} version) (*3rd version*), 1955

Bronze. Foundry: *Valsuani*, edition of 6 + 1 A/P

41 x 15 x 18

Collection: Fogg Museum, Harvard Museums, Boston, example 1/6; inventory no.: 1960.738.

c. Double sorcier (*Double Sorcerer*) or **Sorcier n° 2**, 1954–1955

Bronze. Foundry: *Valsuani*, edition of 6 + 1 A/P

60 x 19 x 22

4.

Totem**a. Totem n° 1** or **Sculpture totémique** (*Totemic Sculpture*), 1953–1965

Bronze. Foundry: *Susse* and *Valsuani*, edition of 6

87 x 16 x 12

Note: Part of the edition was produced at the *Susse* foundry and part at *Valsuani*.

b. Trois totems d'amour (*Three Love Totems*), 1954

Bronze, three pieces. Foundry: *Valsuani*, edition of 6 + 1 A/P

136 x 26 x 20 (*Grand-large*), 97 x 21 x 15 (*Moyen-medium*),

84 x 22 x 13 (*Petit-small*)

Collection: Museu de Arte Moderna do Rio de Janeiro, example 3?/6, titled *Totem d'amour* [which would correspond to *Moyen totem*]; inventory no.: R/0764.

c. Grand totem n° 1, 1954–1975

Bronze. Foundry: *Da Prato*, edition of 6

300 x 70 x 40

Note: Monumental version of one of the *Trois totems d'amour*, 1954, cast in 1975.

d. Grand totem n° 2, 1975

Bronze. Foundry: *Da Prato*, edition of 6

378 x 56 x 75

e. Grand totem n° 3, 1975–1978

Bronze. Foundry: *Da Prato*, edition of 6

470 x 100 x 80

Collection: Eduardo F. Costantini, Buenos Aires, example 2/6.

5.

Le Prisonnier (*The Prisoner*), 1953–1954

Fired clay, unique piece

69 x 47 x 34

6.

Jaguarete (*Jaguar*), 1954–1955

Bronze. Foundry, edition n/a

h 38

7.

Lunar**a. Lunar I** or **Lunar**, 1954

Bronze. Foundry: *Valsuani*, edition of 6

51 x 16 x 21

b. Lunar or **Lunar II**, 1955

Plaster

82 x 43 x 43

c. Lunar III, 1965–1970

Bronze. Foundry: *Valsuani*, edition of 6

110 x 66 x 63

Collection: Museo de la Solidaridad Salvador Allende, Santiago, Chile, example 2/6.

5.



6.



11.



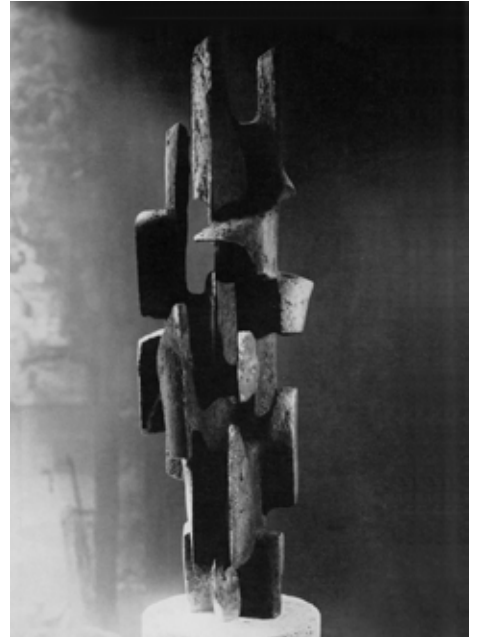
13.



24.



25.



8.

Ancêtre papillon (*Butterfly Ancestor*), 1955

Bronze. Foundry: *Valsuani*, edition of 6 + 1 example in fired clay
82 x 30 x 26

Collection: Centre Pompidou, Paris, example 2/6; inventory no.:
AM1995-58.

9.

Hommage à César Vallejo (*Homage to César Vallejo*)**a. Hommage à César Vallejo**, 1955

Bronze. Foundry: *Susse*, edition of 4 + 1 A/P [+ 1 example in
cement]

266 x 58 x 38

Collections: Centre Pompidou, example 3/4; inventory no.: AM
1980-41. Gwendolyn Weiner, found in the Palm Springs Museum,
California, example 2/4.

b. Grand hommage à César Vallejo, 1974

Bronze. Foundry: *Da Prato*, edition of 5

560 x 140 x 70

Collection: Museo Nacional de Bellas Artes de Caracas, example
2/5; inventory no.: 1979.31.

10.

Ita**a. Ita I**, 1955–1957

Bronze. Foundry, edition n/a

69 x 13 x 13

b. Ita II, 1957

Bronze. Foundry: n/a, edition of 6 + 1 A/P

70 x 14 x 14

11.

Transfuge (*Defector*), 1956–1963

Bronze. Foundry: *Valsuani*, edition of 6

105 x 37 x 19

12.

Liturgie végétale (*Plant Liturgy*)**a. Petite liturgie végétale**, 1956

Bronze. Foundry: *Valsuani*, edition of 6 + 1 example in fired clay
76 x 12 x 10

b. Grande liturgie végétale, 1957

Bronze. Foundry: *Valsuani*, edition of 6 + 1 A/P

107 x 19 x 14

c. Liturgie végétale or **Liturgie végétale n° 2**, 1958

Bronze. Foundry: n/a, edition of 6 + 1 example in fired clay

77 x 18 x 24

Collection: Fundación Federico Jorge Klemm, Buenos Aires,
example 2/6.

13.

Oiseau lunaire (*Lunar Bird*), 1956

Bronze. Foundry: *Valsuani*, edition of 6

82 x 22 x 15

14.

Promeneuse (*Pedestrian*)**a. Promeneuse**, 1956

Bronze. Foundry: n/a, edition of 6

52 x 11 x 8

b. Promeneuse n° 2, 1969

Bronze. Foundry: *Valsuani*, edition of 7 + 1 A/P

81 x 16 x 14

15.

Sculpture-jeu (*Game-Sculpture*)**a. Sculpture-jeu n° 1**, 1956–1957

Polychrome fired clay

35 x 108 x 37

Note: In the catalogs for exhibitions held from 1957 to 1961,
versions no. 2 and no. 3 are listed, dated 1956–1957.

b. Grande sculpture-jeu, 1964

Synthetic stone with cement coating and polychrome finish

110 x 465 x 125

16.

Ancestrale (*Ancestral*), 1957

Bronze. Foundry: n/a, edition of 6

39 x 17 x 11

17.

Ombre habitée (*Inhabited Shadow*), 1957

Bronze. Foundry: *Susse*, edition of 6

103 x 39 x 22

Collection: Van Abbemuseum, Eindhoven; inventory no.: 380.

18.

Oiseau-sirène (*Siren-Bird*)**a. Petit oiseau-sirène**, 1957–1958

Bronze. Foundry: *Valsuani*, edition of 6 + 1 A/P

36 x 37 x 34

b. Oiseau-sirène or **Grand oiseau-sirène**, 1958

Bronze. Foundry: n/a, edition of 6 + 1 A/P

87 x 88 x 62

Collection: Hirshhorn Museum and Sculpture Garden,
Washington, D.C.; inventory no.: 66.3992.

19.

Surveillant des rêves (*Dream Keeper*), 1957–1958

Fired clay. Unique piece

h 83

20.

Étincelle (*Spark*)**a. Étincelle**, 1957

Fired clay (destroyed)

n/a

b. Étincelle n° 2 or **L'Étincelle n° 2**, 1957

Bronze. Foundry: n/a, edition of 6

31 x 36 x 31

Collection: Museum Moderner Kunst - Stiftung Ludwig, Vienna, example titled *La chispa (The Spark)*.

c. *Étincelle* or *Étincelle n° 3*, 1958

Bronze. Foundry: *Valsuani*, edition of 3

40 x 19 x 19

d. *Grande étincelle* or *Grande étincelle n° 1*, 1957?–1959

Bronze. Foundry: *Susse*, edition of 4 + 1 A/P

110 x 57 x 55

Collections: Hirshhorn Museum and Sculpture Garden, Washington, D.C., example 1/4, titled *The Sparkler*; inventory no.: 66.3991.

Middelheimmuseum, Antwerp; example 2/4; inventory no.: 169.

e. *Étincelle n° 4*, 1960

Bronze. Foundry: n/a, edition of 6

35 x 22 x 21

f. *Grande étincelle n° 2*, 1969

Bronze. Foundry: *Valsuani*, edition of 3 + 1 example in fired clay

115 x 65 x 69

21.

***Calice de feu (Chalice of Fire)*, 1958**

Bronze. Foundry: n/a, edition of 6

72 x 61 x 38

Collection: Museum Morsbroich, Leverkusen, example 1/6.

22.

***Contrepoint (Counterpoint)*, 1958**

Bronze. Foundry: *Valsuani*, edition of 6

36 x 70 x 20

23.

Forêt noire (Black Forest)

a. *Forêt noire*, 1958

Bronze. Foundry: n/a, edition of 6

h 85

Note: The edition is interrupted at the second example.

b. *Forêt noire n° 2*, 1958

Bronze, two pieces. Foundry: *Valsuani*, edition of 6 + 1 A/P

90 x 27 x 22 and 26 x 25 x 18

24.

***Incógnita (Mystery)*, 1958**

Bronze. Foundry: *Susse*, edition of 6 + 1 A/P

42 x 15 x 16

25.

***Rendez-vous*, 1958**

Bronze. Foundry: n/a, edition of 6

55 x 60 x 61

26.

Enfance apocalyptique (Apocalyptic Childhood)

a. *Enfance apocalyptique*, 1958–1959

Bronze. Foundry: *Susse*, edition of 6 + 1 A/P

43 x 32 x 27

Collection: Brooklyn Museum, New York; inventory no.: 1992.107.33.

b. *Grande enfance apocalyptique*, 1962–1964

Bronze. Foundry: n/a, edition of 4

180 x 132 x 116

27.

Voyageur des nuits (Night Voyager)

a. *Voyageur des nuits*, 1958

Bronze. Foundry: *Susse*, edition of 6

150 x 31 x 24

b. *Grand voyageur des nuits*, 1968

Bronze. Foundry: *Valsuani*, edition of 6 + 1 A/P

244 x 42 x 35

28.

Cathédrale (Cathedral)

a. *Cathédrale*, 1958–1959

Bronze. Foundry: n/a, edition of 6 + 1 A/P

167 x 44 x 45

b. *Grande cathédrale*, 1969–1970

Bronze. Foundry: *Michelucci*, edition of 4

450 x 140 x 150

29.

Double

a. *Le Double (The Double)* or *Esquisse du double*

(*Draft of Double*), 1959

Bronze. Foundry: *Valsuani*, edition of 6 + 1 A/P

34 x 16 x 15

Collection: Staatsgalerie Stuttgart, Stuttgart; inventory no.: 234.

b. *Petit double*, 1959

Bronze. Foundry: *Susse*, edition of 6 + 1 A/P

19 x 9 x 9

c. *Esquisse du double n° 2*, 1962

Bronze. Foundry: n/a, edition of 6 + 1 A/P

21 x 9.5 x 11

d. *Grand double*, 1962–1964

Bronze. Foundry: n/a, edition of 4 + 1 example in plaster

[+ 1 example in cement]

225 x 100 x 90

Collection: Rijksmuseum Kröller-Müller, Otterlo, example 1/4;

inventory no.: KM 125.42.

e. *Double*, 1972

Bronze. Foundry: *Da Prato*, edition of 8 + 1 A/P

119 x 58 x 58

f. *Grand double (Milwaukee)* or *Grand double n° 2*, 1972

Bronze. Foundry: *Tesconi*, edition of 2

840 x 440 x 405

Collections: MGIC (Mortgage Guaranty Insurance Corporation),

Milwaukee, Wisconsin, example 1/2. Fondation Pierre Gianadda,

Martigny, example 2/2; inventory no. 169.

g. *Grand double (Bordeaux)* or *Grand double n° 3*, 1972

Bronze. Foundry: *Alsasua*, edition n/a

478 x 228 x 205

Collection: Université de Bordeaux-Talence, Bordeaux.

h. Petit double n° 3, 1972

Bronze. Foundry: *Tommasi* and *Da Prato*, edition of 12 + 1 A/P
27 x 13 x 12

Note: Part of the edition was produced at the *Tommasi* foundry and part at *Da Prato*.

Collection: Fondation Pierre Gianadda, Martigny, example A/P;
inventory no.: 191.

30.**Faune des mers** (*Sea Fauna*), 1959

Bronze. Foundry: *Valsuani*, edition of 6 + 1 A/P
43 x 87 x 20

Collections: The Cleveland Museum of Art, example 2/6; inventory no.: 1960.59. Yale University Art Gallery, New Haven; inventory no.: 2006.52.120.

31.**Fontaine** (*Fountain*)

Note: The following "fountain-sculptures" or "fountains" are documented during the period 1959–1970, commissioned by the architects responsible for the buildings where they were originally installed.

a. Fontaine pour Électricité de France, 1959

Polyester coated fiberglass with faux bronze patina
370 x 280 x 340

Architects Coulon and Roux, Électricité de France building, Paris.

Collection: Musée-Unterlinden, Colmar.

b. Fontaine à Firminy-Vert (*Loire*), 1960

Bronze? and steel

600 x 300 ø

Architect Marcel Roux, Firminy-Vert nursery school.

c. Fontaine monumentale (*Monumental Fountain*), **Leverkusen**, 1965

Bronze

n/a

Collection: Wiesdorf District, Leverkusen, in Leverkusen-Wiesdorf, Berufskolleg Geschwister-Scholl-Schule, Bismarckstraße, example without edition information.

d. Fontaine Roche, 1970

Bronze. Foundry: *Michelucci*, twelve pieces

Height ranges from 45 to 150, on reflecting pool

approx. 250 x 1,140

Commissioned for the Société Roche building, on Jatte island, in Neuilly.

32.**Gisant** (*Recumbent*)**a. Gisant** or **Petit gisant**, 1959

Bronze. Foundry: n/a, edition of 6 + 1 A/P

24 x 70 x 36

b. Grand gisant, 1978

Bronze. Foundry: *Da Prato*, edition of 6

140 x 395 x 120

Collections: Martha Müller-Lüth, example 1/6, installed at Skulpturenpark [public space in the Zentrum Paul Klee], Bern. Museo dei Bozzetti, Pietrasanta (draft copy in plaster).

33.**Poursuite du Je** (*In Pursuit of the Self*), 1959

Bronze. Foundry: *Valsuani*, edition of 6 + 1 A/P

32 x 52 x 64

34.**Sculpture murale** (*Mural Sculpture*)

Note: The following bronze relief pieces are documented during the period 1959–1962, registered by the artist as *Sculpture murale*.

a. Imanta brisée (*Magnetize Shattered*), 1959

Bronze. Foundry: n/a, edition of 6 + 1 A/P

47.5 x 55 x 29

b. Orolirio, 1959

Bronze. Foundry: *Bersac*, edition of 6

48 x 21 x 11

c. Grand orolirio, 1959–1962

Bronze. Foundry: *Susse* and *Da Prato*, edition of 5 + 1 A/P

140 x 60 x 35

Note: Part of the edition was produced at the *Susse* foundry and part at *Da Prato*. The A/P was cast at *Da Prato*.

Collection: Museo dei Bozzetti, Pietrasanta, example in plaster.

d. Relief chinois (*Chinese Relief*), 1959

Bronze. Foundry: *Valsuani*, edition of 6 + 1 A/P

59 x 34 x 12

e. Relief japonais (*Japanese Relief*), 1959

Bronze. Foundry: n/a, edition of 6 + 1 A/P

38 x 31 x 9

Note: The A/P was cast at *Valsuani*.

f. Les Amants multiples (*Multiple Lovers*), 1960

Bronze. Foundry: *Susse*, edition of 4 + 1 A/P

118 x 58 x 28

g. Maléfice du mur (*Wall's Curse*), 1960

Bronze, two pieces. Foundry: *Valsuani*, edition of 6

82 x 52 x 28

h. Incantatoire (*Incantatory*), 1961

Bronze, two pieces. Foundry: *Valsuani*, edition of 6 + 1 A/P

50 x 64 x 13

Collection: Museum of Modern Art, Charlotte, North Carolina,

edition n/a; inventory no.: 2003.0063.

i. Incantatoire n° 2, 1961

Bronze. Foundry: *Valsuani*, edition of 6

85 x 41 x 27

j. Vol vers la Seine (*Flight to the Seine*) or **Vers la Seine** (*To the Seine*), 1961

Bronze. Foundry: *Valsuani*, edition of 6

80 x 39 x 16 (single-piece examples)

70 x 62 x 15 (examples 4/6 and 5/6 cast in two pieces)

k. Ils poussent (*They Grow*), 1962

Bronze. Foundry: n/a, edition of 6

50 x 40 x 15 (single-piece examples)

41 x 36 x 15 (examples 1/6 and 2/6 cast in two pieces)

l. Niña (*Little Girl*), 1962

Bronze. Foundry: *Susse*, edition of 6

28 x 16 x 10.5

31 a.



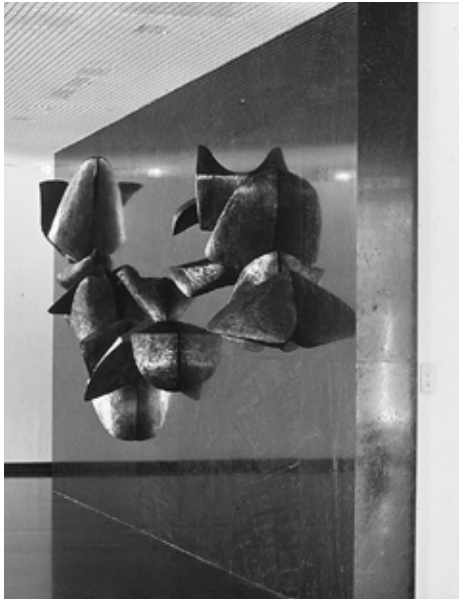
31 a.



31 b.



36 d.



36 h.



m. *Printemps* (Spring), 1962

Bronze. Foundry: *Susse*, edition of 6 + 1 A/P
48 x 32 x 19

n. *Pris dans le mur* (Trapped in the Wall), 1962

Bronze. Foundry: *Susse*, edition of 6 + 1 A/P
43 x 26 x 19

o. *Source*, 1962

Bronze. Foundry: n/a, edition of 6
34 x 55 x 21

p. *Circé* (Circe), 1962–1963

Bronze with patina. Foundry: *Valsuani*, edition of 6
32 x 16 x 12

35.***Alada / Ailée* (Winged)****a. *Alada*, 1960–1963**

Bronze. Foundry: n/a, edition of 6
52 x 110 x 43

Collection: Musée d'Art Moderne de la Ville de Paris, Paris, example 1/6; inventory no.: AMS 397.

b. *Alada II*, 1963–1970

Bronze. Foundry: *Valsuani*, edition of 3 + 1 A/P
62 x 112 x 43

c. *Grande ailée*, 1960–1963

Bronze. Foundry: n/a, edition of 5 + 1 A/P
105 x 195 x 95

Collections: Carnegie Institute, Museum of Art, Pittsburgh, example 3/5; inventory no.: 65.19. Kimbell Art Museum, Texas, example A/P; inventory no.: AG 2011.04.

d. *Ailée n° 5*, 1976

Bronze. Foundry: *Da Prato*, edition of 8
77.5 x 108 x 68.5

Collection: Fondation Pierre Gianadda, Martigny, example 2/8; inventory no.: 75.

e. *Grande ailée n° 5*, 1980

Bronze. Foundry: *Da Prato*, edition of 5
225 x 330 x 177

Collection: Ministerio de Relaciones Exteriores y Culto, Argentina, example 2/5.

f. *Petite ailée*, 1965

Bronze. Foundry: *Valsuani*, edition of 6 + 1 A/P
31 x 54 x 27

g. *Petite ailée n° 2*, 1969

Bronze. Foundry: *Da Prato* and *Valsuani*, edition of 7 + 1 A/P
31 x 35 x 24

Note: Part of the edition was produced at the *Da Prato* foundry and part at *Valsuani*.

h. *Petite ailée n° 3*, 1973

Bronze. Foundry: n/a, edition of 8
29.5 x 26.5 x 14.5

i. *Petite ailée n° 4*, 1973

Bronze. Foundry: *Susse*, edition of 8 + 1 A/P
28 x 38 x 16

j. *Petite ailée n° 5*, 1974

Bronze. Foundry: *Valsuani*, edition of 8 + 1 A/P
24 x 30 x 16

k. *Petite ailée n° 6*, 1978

Bronze. Foundry: *Da Prato*, edition of 8 + 1 A/P
13 x 20 x 10

l. *Petite ailée n° 7* or *Palmeraie* (Palm Grove), 1977

Bronze. Foundry: *Da Prato*, edition of 8 + 1 A/P
14 x 13 x 14

36.***Formes volantes* (Flying Forms)**

Note: The following relief pieces are documented during the period 1960–1977, comprising separate pieces whose number and measurements vary. The artist registers them as *Formes volantes*.

a. *Relief* or *Grand relief*, 1960

Polyester with gold leafing. Edition of 3

Number of pieces and their measurements vary for each installation
Presented at Expomat, CNIT, 1960, Saint-Gobain stand, Puteaux, on panels of tempered glass and mirror, height 250; Kröller-Müller Museum, Otterlo, 1964, on exterior wall, 473 x 613; Musée d'Art Moderne de la Ville de Paris, 1968, 400 x 1,000.

Collection: Kröller-Müller Museum, Otterlo, example 1/3; inventory no.: KM 125.420.

b. *Hakone*, 1969

Gilded polyester. Edition of 6
400 x 1,000 x 150

Collections: The Hakone Open-Air Museum, Kanagawa.
The Phillips Collection, Washington D.C.

c. *Ponente* (Speaker), 1969

Polyester, sixteen pieces. Edition of 3
200 x 600 x 60

d. *Relief Roche*, 1970

Bronze?
n/a

Note: One example was installed at the Société Roche building, on Jatte island, in Neuilly.

e. *Escape*, 1972

Polyester with gold leafing, sixteen pieces in glass box. Edition n/a
200 x 100 x 100

Note: One example was installed at the MGIC (Mortgage Guaranty Insurance Company), Milwaukee, Wisconsin.

f. *Vers l'infini* (To Infinity), 1973

Stainless steel. Edition n/a
300 x 800 x 10

g. *Elogio al fuego* (Tribute to Fire) or *Formes volantes*, 1977

Polyester, fifteen pieces, unique piece
360 x 1,000 x 100

Collection: Museo de Bellas Artes de Caracas; inventory no.: 1979.6.

h. *Formes volantes*, 1977

Gilded bronze. Foundry, edition n/a

Note: One example was installed at the Lycée J.B. Dermet, Saint-Yrieix-la-Perche.

34 a.



34 d.



34 e.



34 f.



34 l.



34 p.



37.

Vol de nuit (*Night Flight*)**a. Vol de nuit**, 1960

Bronze. Foundry: *Valsuani*, edition of 6

14 x 25 x 15

b. Petit vol de nuit, 1975

Bronze. Foundry: *Valsuani*, unique piece, A/P

19 x 29 x 14

c. Vol de nuit, 1976

Bronze. Foundry: *Coubertin*, edition of 8

23 x 28 x 20

38.

Ailealix, 1961

Bronze. Foundry: *Susse*, edition of 6 + 1 A/P

22 x 41 x 22

39.

Ailes à l'aube (*Wings at Dawn*), 1961

Bronze. Foundry: *Susse* and *Da Prato*, edition of 6 + 1 A/P

40 x 52 x 46

Note: Part of the edition was produced at the *Susse* foundry and part at *Da Prato*.

40.

Absente (*Absent*)**a. Absente**, 1961

Bronze. Foundry: *Susse* and *Da Prato*, edition of 6 + 1 A/P

67 x 69 x 37

Note: Part of the edition was produced at the *Susse* foundry and part at *Da Prato*.

b. Grande absente (*Large Absent*), 1967

Bronze. Foundry: n/a, edition of 4

200 x 175 x 100

Collection: Ministerio de Relaciones Exteriores y Culto, Argentina, example 4/4.

41.

Chrysalide (*Chrysalis*)**a. Chrysalide**, 1961

Bronze. Foundry: *Valsuani*, edition of 6 + 1 A/P

41 x 78 x 48

Note: One A/P was cast at *Da Prato*.

Collection: Albright-Knox Art Gallery, Buffalo, example 3/6.

b. Chrysalide II, 1961

Bronze. Foundry: *Valsuani*, unique piece

45 x 83 x 46.5

Collection: Centre Pompidou, Paris, example 1/1; inventory no.:

AM 1358 S.

c. Chrysalide III, 1974

Bronze. Foundry: *Susse*, edition of 3 + 1 A/P

49 x 76 x 51

Note: The A/P was cast at *Valsuani*.

d. Esquisse de chrysalide (*Draft of Chrysalis*) or **Colombe**

(*Dove*), 1976

Bronze. Foundry: *Susse*, edition of 8

24 x 27 x 14

e. Petite chrysalide or **Esquisse de chrysalide**, 1976

Bronze. Foundry: *Coubertin* and *Da Prato*, edition of 8

31 x 41 x 21

Note: Part of the edition was produced at the *Coubertin* foundry and part at *Da Prato*.

42.

Dialogue (*Dialogue*)**a. Petit dialogue**, 1961–1963

Bronze, two pieces. Foundry: *Valsuani*, edition of 6 + 1 A/P

15.5 x 17 x 14 and 14 x 15 x 15

b. Dialogue, 1964

Bronze, two pieces. Foundry: *Valsuani*, edition of 6 + 1 A/P

59.5 x 66 x 59 and 59 x 61 x 65

c. Grand dialogue, 1964–1965

Bronze, two pieces. Foundry: n/a, edition of 4

155 x 180 x 150 and 155 x 150 x 160

d. Grand dialogue, 1964–1971

Bronze, two pieces. Foundry: *Da Prato*, edition of 3

152 x 156 x 156 and 148 x 146 x 164

Collection: Fondation Pierre Gianadda, example 1/3;

inventory no.: 220.

e. Esquisse dialogue n° 2 (*Draft Dialogue no. 2*), 1974

Bronze. Foundry: *Valsuani*, edition of 8

19 x 31 x 17

43.

Ancêtre ailée (*Winged Ancestor*), 1962

Bronze. Foundry: *Da Prato*, edition of 6 + 1 A/P

32.5 x 73 x 49.8

Collections: New Orleans Museum of Art, New Orleans, example

1/6; inventory no.: 63.42. Colección de Arte Amalia Lacroze de

Fortabat, Buenos Aires, example 6/6.

44.

Grande imanta (*Large Magnetize*), 1962

Bronze. Foundry: *Susse*, edition of 4 + 1 A/P + 1 original in clay

mounted on plaster

104 x 120 x 52

Collection: Dallas Museum of Fine Art, Dallas, example 3/4;

inventory no.: 1965.11.

45.

Premier vol (*First Flight*), 1962

Bronze. Foundry: *Valsuani*, edition of 6

18 x 29 x 17

46.

Trofeo (*Trophy*), 1962

Bronze. Foundry: *Susse*, edition of 6

45 x 47 x 31

47.

Saint-Gall or **Winged Field**, 1963

Concrete, eleven pieces

Height ranges from 110 to 400

Installed at the Universität St. Gallen, St. Gallen

Note: Work commissioned by architect Walter Förderer. Twelve pieces were included in the original project.

48.

Annonciatrice (*Female Annunciator*)**a. Annonciatrice** or **Petite annonciatrice**, 1963Bronze. Foundry: *Susse*, edition of 6

39 x 52 x 29

Collection: The Phillips Collection, Washington, D.C., example 2/6; inventory no.: 1467.

b. Grande annonciatrice, 1965

Bronze. Foundry: n/a, edition of 5

92 x 135 x 70

49.

Trilogie (*Trilogy*), 1965Bronze, three pieces. Foundry: *Da Prato*, edition of 6

138 x 45 x 25, 180 x 45 x 20 and 150 x 42 x 23

50.

Adentro (*Inside*), 1969

Bronze. Foundry: n/a, edition of 6 + 1 A/P

17 x 34 x 25

51.

Petit mur (*Small Wall*), 1969–1977Bronze. Foundry: *Susse*, edition of 10 + 1 A/P

19 x 14 x 10

Note: The A/P was cast at *Valsuani* and is listed as *Petit mur* (*Projet pour l'architecture*) (*Project for Architecture*).

52.

Prenant (*Fascinating*), 1969Bronze. Foundry: *Valsuani*, edition of 6 + 1 A/P

14 x 35 x 18

53.

Mistral, 1970Bronze. Foundry: *Valsuani*, edition of 7

47 x 38 x 28

54.

Oblique, 1970Bronze. Foundry: *Valsuani*, edition of 8 + 1 A/P

22 x 25 x 18

55.

Petit fruit (*Small Fruit*)**a. Petit fruit**, 1970

Bronze. Foundry: n/a, edition of 12

10.5 x 14 x 15

b. Petit fruit n° 2, 1970–1980Bronze with polychrome finish. Foundry: *Da Prato*, edition of 8
12 x 14 x 16

56.

Saccadée (*Shaken*), 1970Bronze. Foundry: *Valsuani*, edition of 8 + 1 A/P

24 x 27 x 17

57.

Tropique (*Tropic*), 1970Bronze. Foundry: *Valsuani*, edition of 6 + 1 A/P

51 x 52 x 44

58.

Viento (*Wind*), 1970Bronze. Foundry: *Susse*, edition of 7 + 1 A/P

32.5 x 32 x 20

59.

Duo**a. Grand duo**, 1970–1971Bronze, two pieces. Foundry: *Valsuani*, edition of 6

102 x 170 x 71 and 93 x 156 x 65

b. Duo n° 2, 1972Bronze. Foundry: *Tesconi*, edition of 8

47 x 62 x 68

c. Duo, 1973Bronze. Foundry: *Valsuani*, edition of 8

56 x 56 x 60

d. Duo, 1973

Stainless steel, two pieces. Edition n/a

32 x 47 x 18 and 32 x 45 x 14

60.

Refuge**a. Refuge**, 1970–1972

Aluminum. Edition n/a

Steel. Edition of 10

64 x 40 x 62

b. Petit refuge, 1975Bronze/nickel silver. Foundry: *Da Prato*, edition of 300

21 x 23 x 14

Note: Part of the edition was cast in bronze and part in nickel silver.

c. Grand refuge, 1976Bronze. Foundry: *Da Prato*, edition of 6

270 x 170 x 300

Collections: Martha Müller-Lüth, example 1/6, installed at the Skulpturenpark Martha Müller, Zentrum Paul Klee, Bern. Fundación Atchugarry, Maldonado, Uruguay, example n/a.

32 a.



50.



51.



60 b.



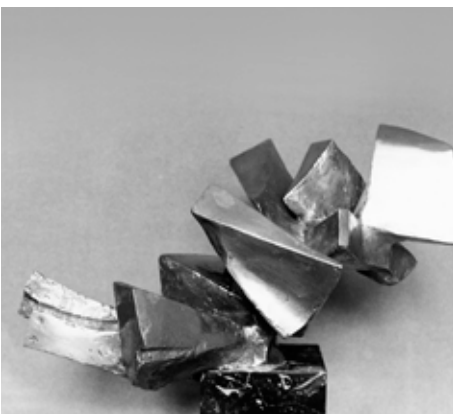
63.



77.



79.



35 l.



81 i.



61.

Capricorne (*Capricorn*)**a. Capricorne**, 1970

Bronze. Foundry: n/a, edition of 6 + 1 A/P

56 x 52 x 23

b. Petit Capricorne (*Small Capricorn*), 1977

Bronze? Edition of 8

38 x 35 x 16

62.

Dans les bambous (*Among the Bamboo*), 1971Bronze. Foundry: *Tesconi* and *Valsuani*, edition of 8 + 1 A/P

31 x 42 x 36

Note: Part of the edition was produced at the *Tesconi* foundry and part at *Valsuani*.

63.

Trio, 1972

Bronze. Foundry: n/a, edition of 8 + 1 A/P

58 x 66 x 52

64.

Ventisquero (*Blizzard*), 1973Bronze. Foundry: *Valsuani*, edition of 8

90 x 102 x 65

65.

Altiplano (*High Andean Plateau*), 1974Bronze. Foundry: *Da Prato* and *Susse*, edition of 8 + 1 A/P

78 x 88 x 54

Note: Part of the edition was produced at the *Da Prato* foundry and part at *Susse*.

66.

Soleil (*Sun*)**a. Soleil**, 1974Bronze. Foundry: *Susse*, edition of 8 + 1 A/P

74 x 97 x 88

b. Petit soleil, 1974

Bronze. Foundry: n/a, edition of 8 + 2 A/P

19 x 19 x 19

67.

Rumeur d'ailes (*Murmur of Wings*), 1974Bronze. Foundry: *Valsuani* and *Da Prato*, edition of 8

52 x 45 x 47

Note: Part of the edition was produced at the *Valsuani* foundry and part at *Da Prato*.

68.

Scherzando (*Joking*), 1974Bronze. Foundry: *Da Prato*, edition of 8 + 1 A/P

58 x 52 x 54

Collections: Museo dei Bozzetti, Pietrasanta, example in plaster.
Colección de Arte Amalia Lacroze de Fortabat, Buenos Aires, example 7/8.

69.

Éclat (*Sparkle*)**a. Éclat n° 1** or **Petit éclat**, 1974

Bronze. Foundry: n/a, edition of 8

17 x 15 x 19

b. Éclat, 1975Bronze. Foundry: *Da Prato*, edition of 8

28 x 22 x 32

70.

Cinq ailes (*Five Wings*)**a. Cinq ailes**, 1975Bronze. Foundry: *Susse*, edition of 8

93 x 90 x 92

b. Esquisse cinq ailes (*Draft Five Wings*)

Bronze. Foundry, edition n/a

18 x 14 x 16

71.

Cascade, 1976Bronze. Foundry: *Da Prato*, edition of 8

26 x 19 x 15.5

72.

Migrateur (*Migrant*), 1976Bronze. Foundry: *Da Prato*, edition of 8 + 1 A/P

33 x 39 x 24

73.

Signe (*Sign*) or **Cygne** (*Swan*), 1976–1980Bronze. Foundry: *Susse* and *Da Prato*, edition of 8

87 x 76 x 61

Note: Part of the edition was produced at the *Susse* foundry and part at *Da Prato*. Both titles have been documented. The measurements listed correspond to an example identified as *Cygne*, cast at *Da Prato*.

74.

Verso mare (*To the Sea*), 1976

Bronze. Foundry: n/a, edition of 8

22 x 25 x 17

75.

Verso monte (*To the Mountain*), 1976Bronze. Foundry: *Da Prato*, edition of 8 + 1 A/P

40 x 24 x 38

76.

Les Sept (*The Seven*), 1980

Gilded bronze on metal plate

Foundry: *Da Prato*, edition of 300 + 1 A/P

32 x 25 x 8

81 a.

14



81 b.



81 c.



81 d.



81 h.



82 a.



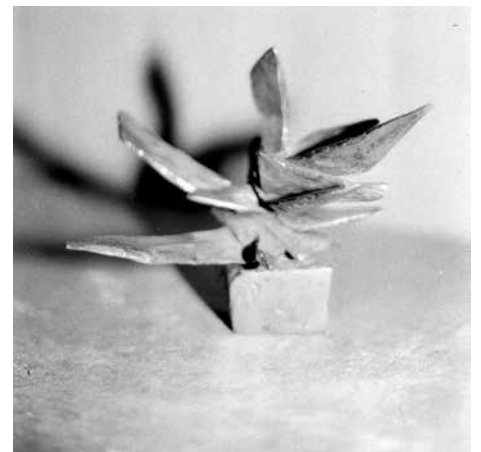
82 b.



82 c.



82 d.



83 a.

15



83 b.



83 c.



83 e.



83 f.



83 h.



83 i.



77.

Créature (*Creature*), 1981
Gilded bronze on metal plate
Foundry, edition n/a
30 x 23 x 8

78.

Météore (*Meteor*), 1981
Bronze. Foundry: *Susse*, edition of 8
80 x 140 x 70
Collection: Museo Nacional de Bellas Artes, Buenos Aires,
example 3/8; inventory no.: 10678.

79.

Sdraiata (*Reclining*), 1981
Bronze. Foundry: *Da Prato*, edition of 8 + 1 A/P
24 x 42 x 25

80.

Sirène (*Siren*), 1981
Bronze. Foundry: *Susse*, edition of 8
140 x 76 x 82
Collection: Colección de Arte Amalia Lacroze de Fortabat,
Buenos Aires, example 3/8.

81.

Esquisse (*Draft*)
Note: In all of these cases, the edition comprises examples in bronze
and examples in nickel silver.

a. Esquisse n° 1, 1981–1982

Bronze/nickel silver. Foundry: *Da Prato*, edition of 8 + 1 A/P
9.5 x 9 x 6

b. Esquisse n° 2, 1981–1982

Bronze/nickel silver. Foundry: *Da Prato*, edition of 8
12 x 12 x 8

c. Esquisse n° 3, 1981–1982

Bronze/nickel silver. Foundry: *Da Prato*, edition of 8
11 x 10 x 8

d. Esquisse n° 4, 1981–1982

Bronze. Foundry: *Da Prato*, edition of 8
16 x 16 x 12

e. Esquisse n° 5, 1981–1982

Bronze. Foundry, edition n/a
16.5 x 17 x 11

f. Esquisse n° 6, 1981–1982

Bronze/nickel silver. Foundry: *Da Prato*, edition of 8 + 1 A/P
20 x 24 x 15

g. Esquisse n° 7, 1981–1982

Bronze/nickel silver. Foundry: *Da Prato*, edition of 8
23 x 18 x 24

h. Esquisse n° 8, 1981–1982

Bronze/nickel silver. Foundry: *Da Prato*, edition of 8 + 1 A/P
21 x 29 x 20

i. Esquisse n° 9, 1981–1982

Bronze/nickel silver. Foundry: *Da Prato*, edition of 8
29 x 18 x 15

82.

Sculpture

a. Sculpture n° 4, 1982

Bronze with patina. Foundry: *Da Prato*, edition n/a
15 x 8 x 12.5

b. Sculpture n° 5 bis, 1982

Bronze. Foundry: *Da Prato*, edition of 8
25 x 29 x 16

c. Sculpture n° 9, 1982

Nickel silver. Foundry: *Da Prato*, edition of 8
15 x 17 x 16

d. Sculpture n° 10, 1982

Nickel silver. Foundry, edition n/a
11 x 12 x 9

83.

Essai (*Essay*)

a. Essai n° 1, 1982

Polished bronze. Foundry, edition n/a
9 x 13 x 16

b. Essai n° 2, 1982

Bronze. Foundry, edition n/a
9 x 10 x 7

c. Essai n° 3, 1982

Bronze. Foundry, edition n/a
12 x 10 x 11

d. Essai n° 4, 1982

Polished bronze. Foundry, edition n/a
12 x 18 x 11

e. Essai n° 5, 1982

Polished bronze. Foundry, edition n/a
13 x 16 x 11

f. Essai n° 6, 1982

Polished bronze. Foundry, edition n/a
13 x 19 x 13

g. Essai n° 7, 1982

Polished bronze. Foundry, edition n/a
16 x 19 x 15

h. Essai n° 8, 1982

Polished bronze. Foundry, edition n/a
21 x 15 x 19

i. Essai n° 9, 1982

Polished bronze. Foundry, edition n/a
14 x 16 x 16